

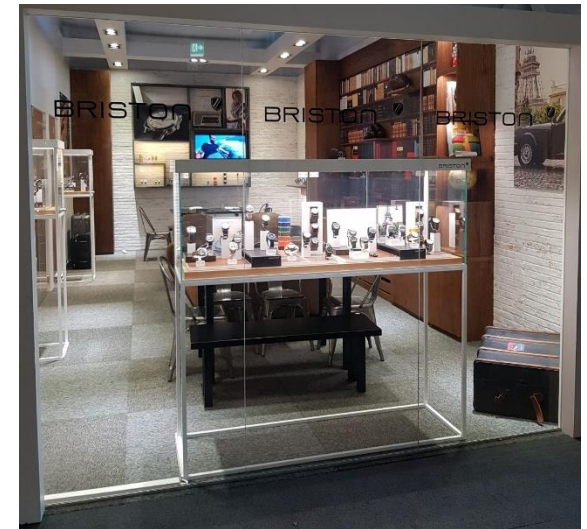
# **BRISTON**

## **Merchandising**

# PRESENTATION **NEW**

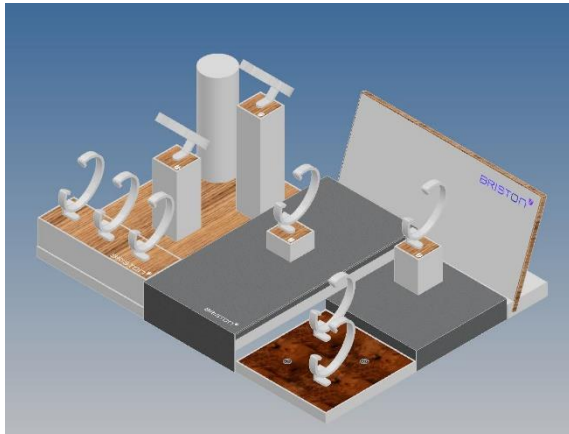
We are introducing a new display, in a modern and lifestyle spirit.

These new elements are made in wood, with white mate details. We created this new display in order to answer to our customers request to have something warmer to display the BRISTON watches.

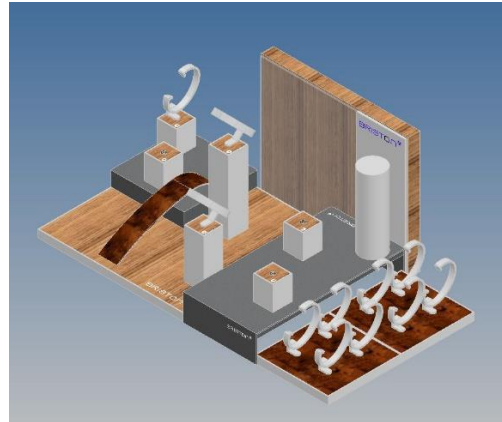


# PRESENTATION **NEW**

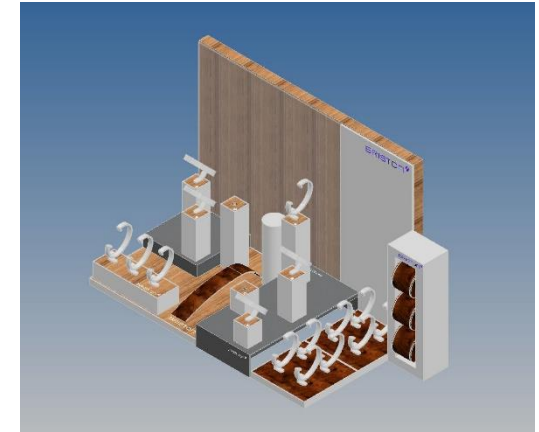
Here are the 3 different sizes of the display we will launch end of September :



Counter display



Window display



Big window display





# PRESENTATION **NEW**

With a pad system, we offer our customers to create according to their wishes : a lot of combinaisons of the display are possible.

Using some new materials and finishing, we introduce in our display items the warmth you could feel in our booth on Basel Fair.

Wood, leather and old steel meets our white mate finishing and acrylic frosted effect.



# PRESENTATION

**NEW**

Counter display



Counter display

Reference : D1\_2019 / D1\_2019-E (extended version)

Base display dimensions: 30 x 30 cm

Back height : 15 cm

Maximum display dimensions: 30 x 60 cm

Number of watches: 12 / 19 (extended version)

**BRISTON** 

# PRESENTATION **NEW**

## Window display



## Window display

Reference : D0\_2019 / D0\_2019-E (extended version)

Base display dimensions: 30 x 30 cm

Back height : 25,5 cm

Maximum display dimensions: 30 x 60 cm

Number of watches: 15 / 22 (extended version)

**BRISTON** 



# PRESENTATION

**NEW**

Big Window display



## Window display

Reference : DOBIG\_2019 / DOBIG\_2019-E (extended version)

Base display dimensions: 30 x 30 cm

Back height : 44,5 cm

Maximum display dimensions: 30 x 60 cm

Tour height : 28 cm

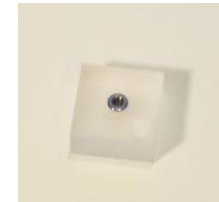
Number of watches: 21 / 28 (extended version)

**BRISTON** 

# PRESENTATION

**Please keep in mind**

This new display is planned to be used with all our former watch holders in frosted acrylic. Please keep and tell your client to keep the old watch holders, they can use them on the new display as per in the picture here under.  
You have to mix the frosted effect with wood, leather and steel.



When you order some displays, you can choose :

- The normal solution (Counter, Window or Big window) for your current customers – only wood watch holders
- The « extended » solution (Counter Window or Big Window) for your new client – with a set of frosted effect watch holders



# PRESENTATION



BRISTON Bobino cylinder for Lady presentation

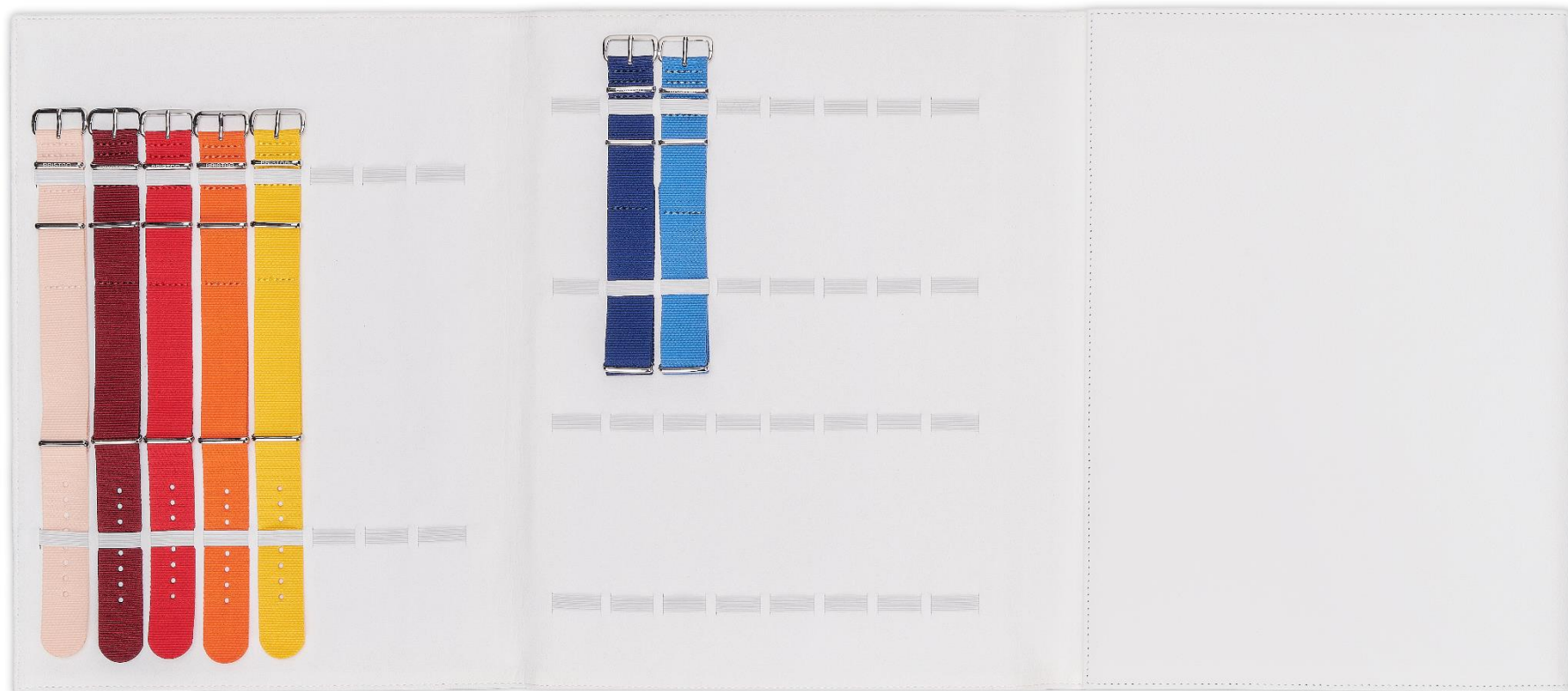
Reference: BOBINO\_19

Dimensions: 21 x 5 x 10 cm

Number of watches: 4

# PRESENTATION

And still available...



## BRISTON pouch

Reference: PUSCH\_18

Dimensions: 23 x 30 cm

Number of straps: 48

White leather and suede with embossed logo

BRISTON 

# PRESENTATION



## BRISTON shopping bag

Reference : SAC\_18

Dimensions : 29 x 22 x 12 cm

White cardboard, blue cotton handles



# PRESENTATION



BRISTON new watch box  
Dimensions : 19 x 9.5 x 4 cm  
White/blue cardboard and grey suede